

# Enhanced 18-Month Well Baby Visit Flow Chart in York Region

## Visit

### Supportive family focused discussion about

- child development, parenting, connection to local community programs & services, and promotion of early literacy/book reading

Use Fee Code: Enhanced 18 month Well Baby Assessment: GP/FP-A002; Pediatrics-A268

### Standardized Screening Tools

\* Nipissing District Developmental Screen™ (NDDST™): Parent

\* Rourke Baby Record: Physician

### Alternative/Additional 18-Month Screening Tools that can be used

\* Ages and Stages Questionnaire (ASQ)

\* Healthy Teeth Healthy Kids

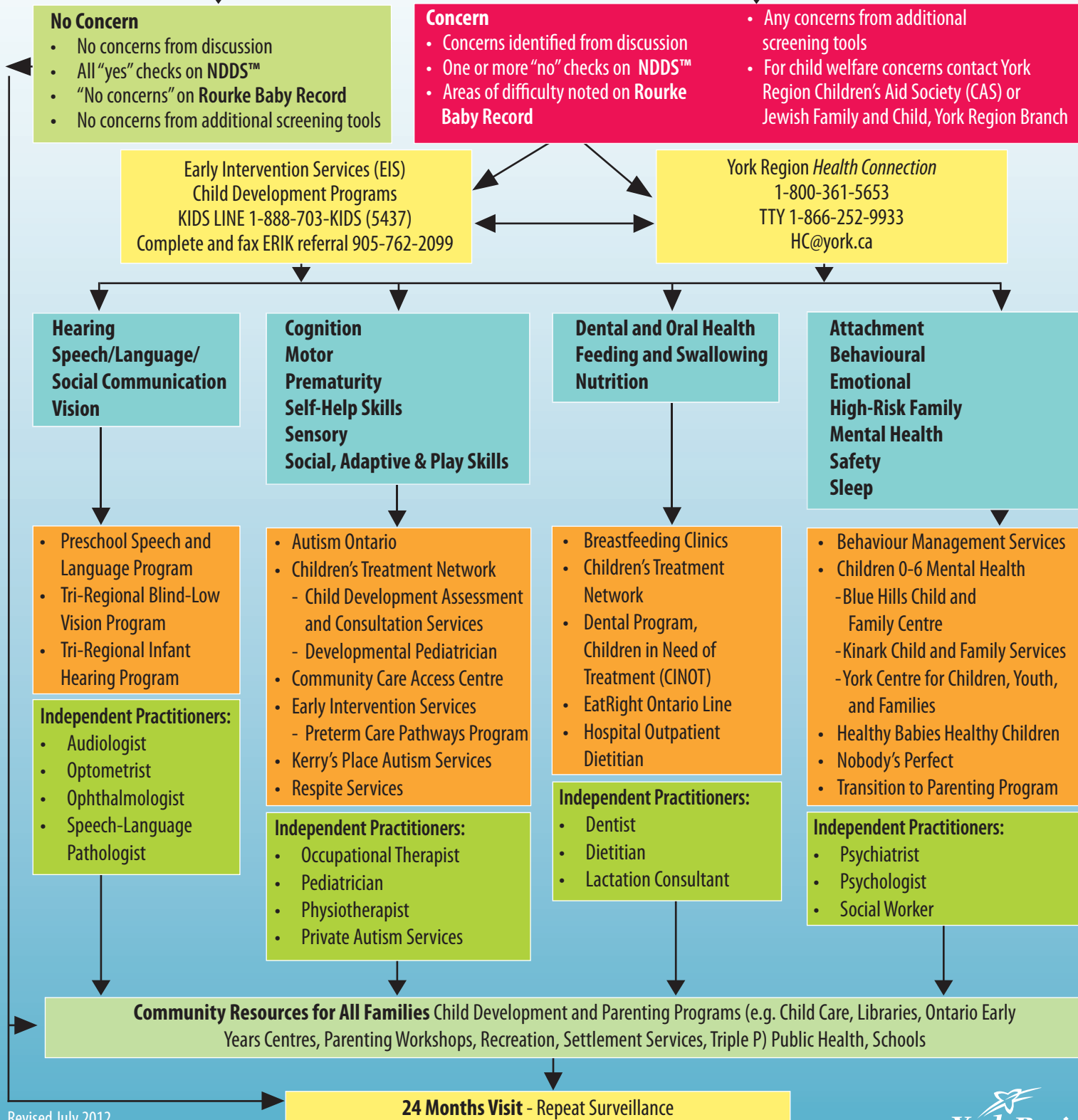
\* Early Referral Identification Kit (E.R.I.K)

\* Checklist for Autism in Toddlers (CHAT)

\* Modified Checklist for Autism in Toddlers (M-CHAT)

\* Toddler NutriSTEP

\*Please see reverse for more information about screening tools



Revised July 2012

[www.york.ca/earlyyears](http://www.york.ca/earlyyears) - online version kept up-to-date

# Screening Tools for 18 Month Visit in York Region

Tool	Purpose	Languages
<b>Ages and Stages Questionnaire® (ASQ)</b> <a href="http://www.agesandstages.com">www.agesandstages.com</a>	To identify children that may require further assessment. Also can be used as a monitoring tool to gauge the development of children who are at-risk for developmental disabilities or delays.	English French Spanish Korean (some ages)
<b>Checklist for Autism in Toddlers (CHAT)</b> <a href="http://www.autismcanada.org&gt;about&gt;chatchecklist">www.autismcanada.org&gt;about&gt;chatchecklist</a>	To identify social communication disorders and autism spectrum disorder.	English
<b>Early Referral Identification Kit (ERIK)</b> <a href="http://www.beyond-words.org">www.beyond-words.org</a>	The referral protocol for EIS & YRPSLP which includes screening of developmental norms and red flags.	English
<b>Healthy Teeth, Healthy Kids</b> York Region <i>Health Connection</i> <a href="http://www.york.ca/teeth">www.york.ca/teeth</a>	A screening tool to help parents keep track of children's dental health, development and to provide guidance about the need for children to see a dental professional. Can be parent administered.	English
<b>Modified Checklist for Autism in Toddlers (M-CHAT)</b> <a href="http://www.firstsigns.org/downloads/m-chat.PDF">www.firstsigns.org/downloads/m-chat.PDF</a> <a href="http://www.firstsigns.org/downloads/m-chat_scoring.PDF">www.firstsigns.org/downloads/m-chat_scoring.PDF</a>	To detect children at risk for autism spectrum disorder.	English Spanish
<b>Nipissing District Developmental Screen™ (NDDS)™</b> York Region <i>Health Connection</i> <a href="http://www.ndds.ca">www.ndds.ca</a>	To identify children at risk for developmental delays and post screening referral when indicated. Can be parent administered.	English French Spanish Chinese Vietnamese
<b>Rourke Baby Record</b> <a href="http://www.rourkebabyrecord.ca">www.rourkebabyrecord.ca</a> <a href="http://www.cfpc.ca">www.cfpc.ca</a> <a href="http://www.cps.ca">www.cps.ca</a>	A tool for physicians/nurse practitioners to monitor child's first five years of development.	English
<b>Toddler NutriSTEP® - Nutrition Screening Tool (In development. Will be ready in 2012)</b> York Region <i>Health Connection</i> <a href="http://www.york.ca/nutristep">www.york.ca/nutristep</a>	To identify toddlers at nutritional risk. Can be parent administered.	English French

## Additional Resource

*Red Flags Guide, A Quick Reference Guide for Early Years Professionals in York Region. Early Identification of Red Flags in Child Development Prenatally to Age Six, 2009.* This document is a quick reference guide to assess children up to the age of six years for growth and development by domains. This document will help you to better understand when and where to make referrals for further investigation or intervention in York Region. [www.york.ca/redflags](http://www.york.ca/redflags). Available in English (2009).

For information, resources, and e-learning related to the Enhanced 18 month visit in Ontario go to [www.18monthvisit.ca](http://www.18monthvisit.ca)

For more information contact: York Region *Health Connection* 1-800-361-5653 (TTY 1-866-252-9933). Early Intervention Services 1-888-703-KIDS (5437)